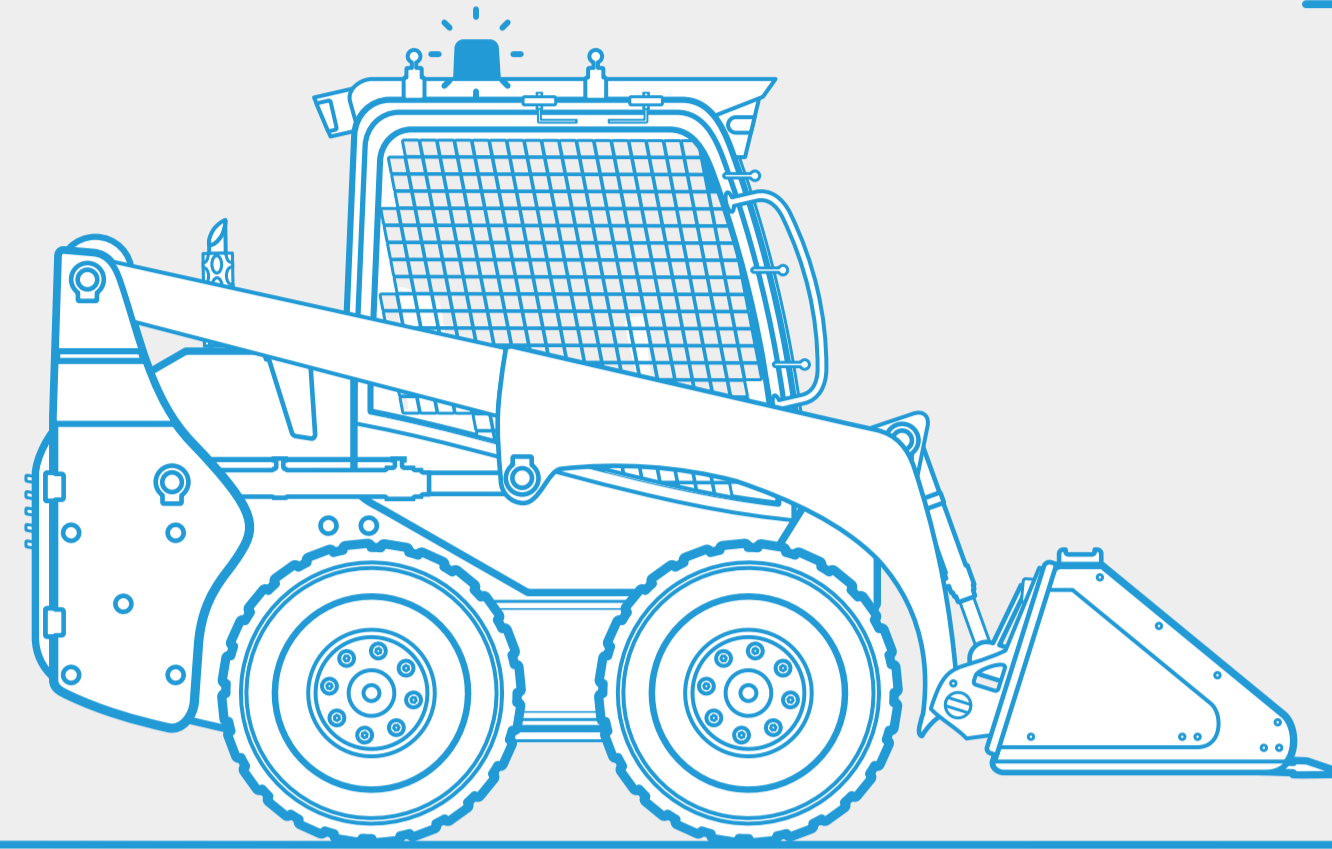


# Mobile Plant



## Risk - Mobile plant striking people.

### Eliminate

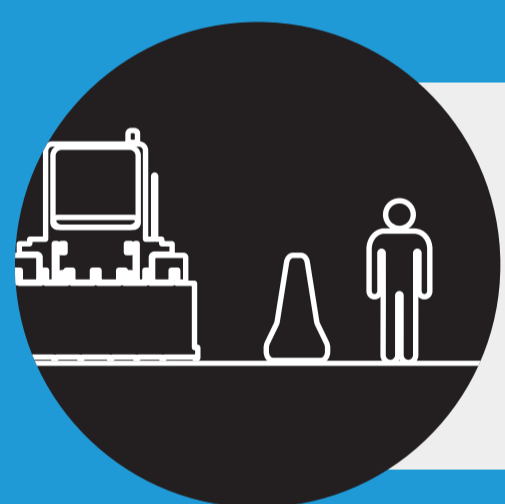
If possible eliminate the need for people to work in and around mobile plant

### Minimise

If not eliminated, I will apply the below controls as a minimum:



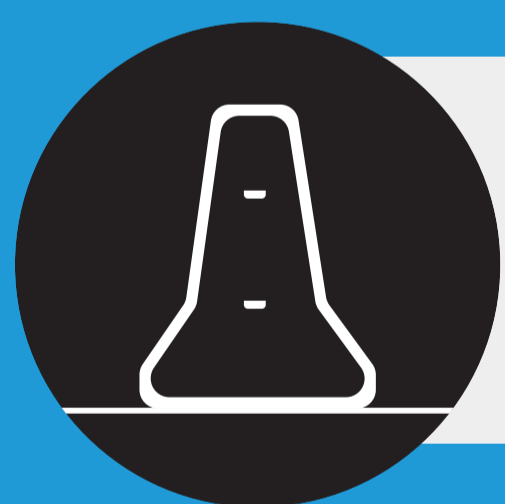
Mobile plant operators are qualified and competent



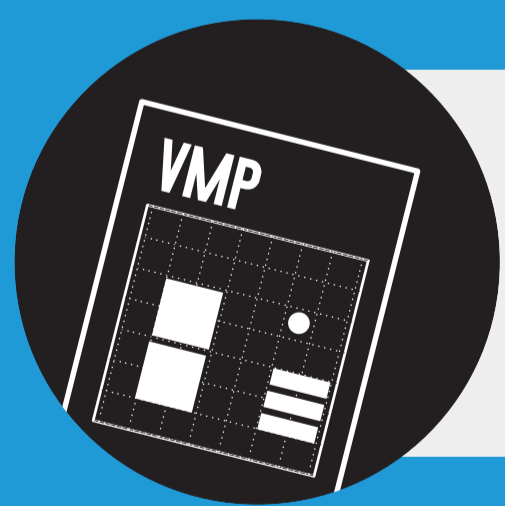
Provide separate pedestrian and plant entrances to site



All mobile plant is inducted to site



Establish exclusion zones to isolate people from plant operation



Establish a site Vehicle Movement Plan



Mobile plant is stationary prior to people entering the MPOZ



Establish dedicated pedestrian routes

**MPOZ**

\* Mobile Plant Operating Zone (MPOZ) is the zone around mobile plant where a person could be harmed by its movement

Our **Risk Standards**

Any questions or feedback? Reach out to our team on site.