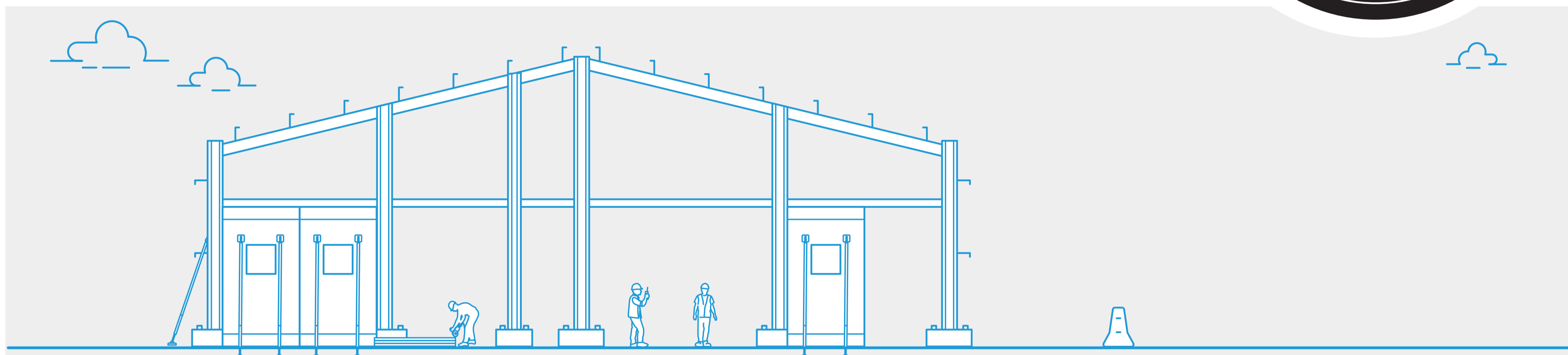
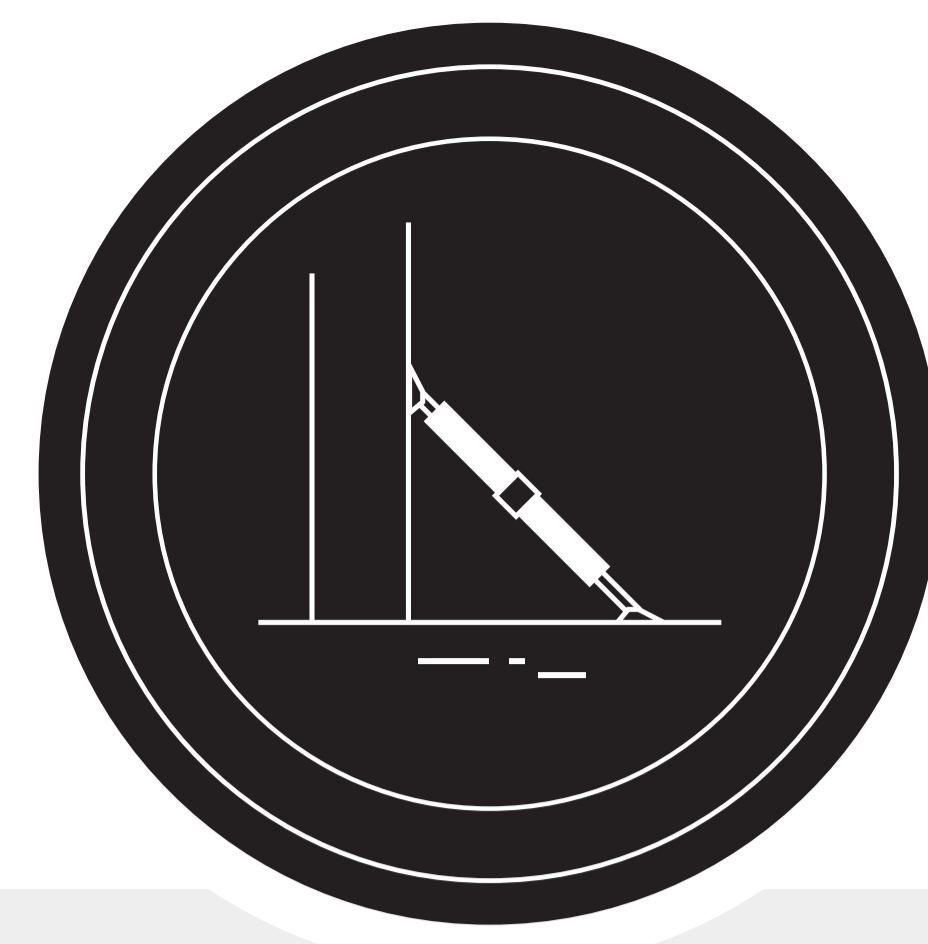


Structural Steel and Precast



Risk - Collapse or failure of structural steel or precast

Eliminate

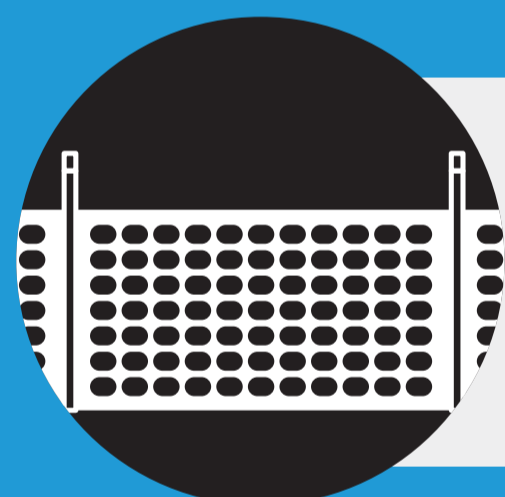
It is not reasonably practicable to eliminate Structural Steel and Precast, therefore we must minimise

Minimise

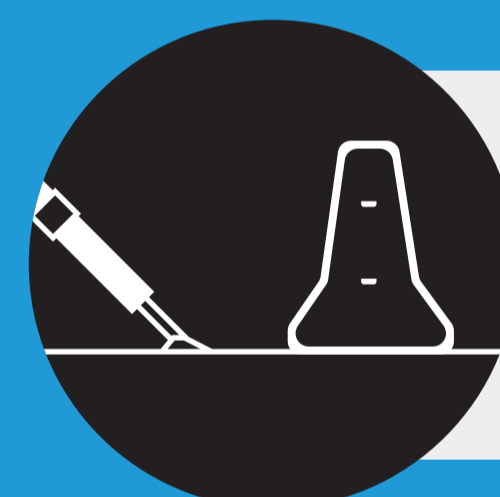
I will apply the below controls as a minimum:



Completed and approved Form 313 – Precast Panel Erection



Physical exclusion zones established during erection and dismantling



Temporary supports are physically protected from impact



Completed and approved Form 316 – Structural Steel Erection



Engineered approval for all modifications and alterations



People involved hold the appropriate high-risk work licenses

Our **Risk Standards**

Any questions or feedback? Reach out to our team on site.



FRASERS
PROPERTY